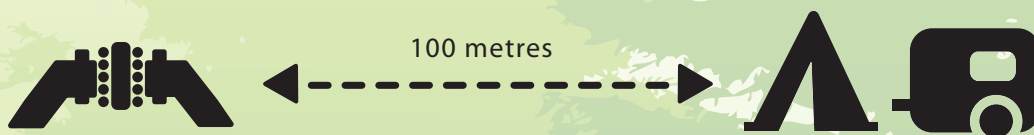


For your safety, please camp at least
100 METRES away from any
Oil & Gas wellsite or facility.



There are numerous gas wells and facilities in this area. These wells and facilities contain flammable and poisonous hydrogen sulphide (H₂S), also known as sour gas. Camping on gas well and facility sites is not permitted – you will be trespassing. Gas facilities are designed to meet stringent standards, but in the event that the facility is wilfully or accidentally damaged, it is unsafe to be in close proximity. A minimum set-back of 100m from sour gas wells and facilities has been established by the Energy Resources Conservation Board (ERCB) for residential buildings. Husky, Suncor and Shell (operators in the Ghost/Waiparous Forest Land Use Zone) recommend the same distance be respected for camping.



Sour gas and related infrastructure in the Ghost-Waiparous area

The natural gas present within the Ghost-Waiparous Forest Land Use Zone contains hydrogen sulphide (H₂S), also known as sour gas. At low concentrations, H₂S presents little danger to health but exposure to higher concentrations can be extremely dangerous. Oil and gas infrastructure (well sites, pipelines, valves, etc.) are designed to meet stringent standards. However, recreational users in the area should be aware of the presence of sour gas and remain vigilant whenever camping or travelling around such facilities. For more information visit www.health.alberta.ca.



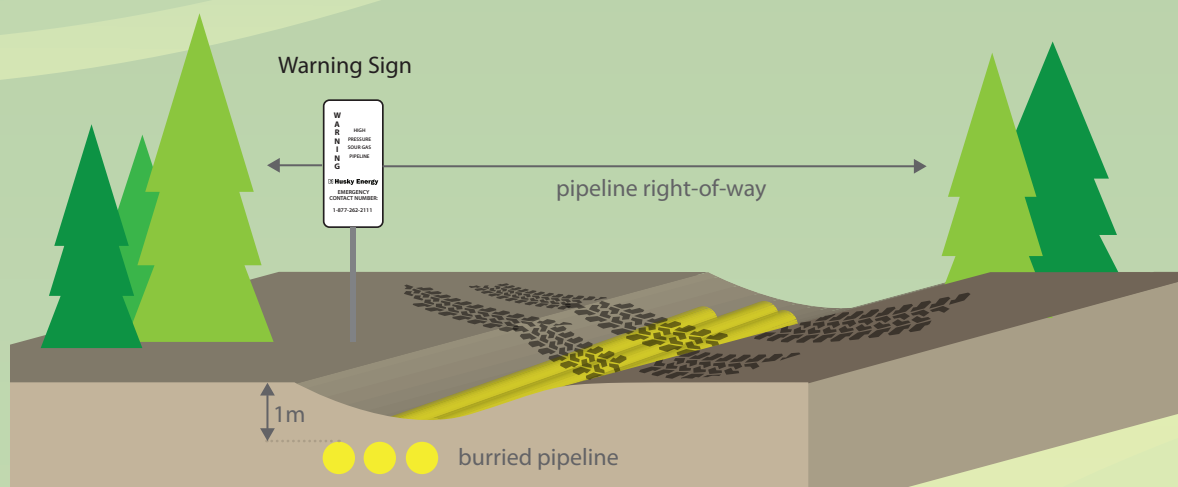
Husky Energy



For your safety, please do not travel through **wet or steep areas** on Oil & Gas Pipeline right-of-ways

There are numerous oil and gas pipelines in this area. The pipelines are not visible, but there are signs showing their location (usually posted at road and river crossings.) The pipelines are protected from damage by ground (soil) cover, which is typically only one metre thick.

Husky, Suncor and Shell (local operators) have observed an alarming amount of erosion of the ground cover over the pipelines in this area. The erosion has been caused by OHV (Off Highway Vehicle) traffic, and is particularly bad on steep slopes and in low/wet areas. In some places, deep ruts have reduced pipeline ground cover below the minimum safe allowance specified by the ERCB (Energy Resources Conservation Board).



**W
A
R
N
I
N
G**

**HIGH
PRESSURE
SOUR GAS
PIPELINE**

Husky Energy
EMERGENCY
CONTACT NUMBER:
1-877-262-2111

The area operators have made repairs and reclaimed these areas, but it is important for your safety to minimize further damage. When traveling on a pipeline right-of-way, please stay away from areas under reclamation, and from areas that show signs of rutting. Conventional vehicles (e.g., 4x4 trucks) should never be driven off road over a pipeline right-of-way.

If your vehicle becomes stuck on a pipeline right-of-way, or if you expose or contact a pipeline with your tires, leave the vehicle and call the emergency number shown below. Do not attempt to pull the vehicle free until the situation has been assessed and a plan prepared by the qualified pipeline operator.

Contact Info/ Further Info

Husky Energy Emergency Contact Number: **1.877.262.2111**

Shell Burnt Timber Plant: Plant and Field Emergency Number: **403.637.6060**

Energy Resources Conservation Board **www.ercb.ca**

Sustainable Resource Development (SRD) office authorities.

SRD Calgary Office: **403.297.8800 (310.0000 toll-free) www.srd.alberta.ca**

Users in the Ghost-Waiparous area are in the Ghost Forest Land Use Zone.



Husky Energy

